

**UniMac Heated Roll  
Flatwork Finisher**

**UniMac**®

**8" roll (200 mm)  
13" roll (325 mm)  
20" roll (500 mm)**



***Expert Solutions from the Laundry Experts***



**T**ake a moment and step into the world of high tech product engineering where UniMac flatwork finishers are designed with innovative features that command top performance, and durable steel construction that will stand the test of time. At UniMac, flatwork finishers are considered more than just laundry equipment. They are key players in the success of commercial laundry facilities and as such must continuously achieve high levels of efficiency, quality and durability. UniMac always has maintained a standard of excellence in flatwork finisher manufacturing that is recognized around the world. With over 50 years of engineering expertise you can be assured that you are getting the best flatwork finishers on the market that will meet your needs now and in the future.

### Quality

Every piece of flatwork should be perfectly finished. Your customer can touch the difference as they hold it close. You must make a lasting impression with a high quality look and feel to your linens.

UniMac is the leading brand of on-premises laundry equipment. We are known for our innovation, quality and commitment to the industry. UniMac flatwork finishers are no exception. Our product is built to provide the highest quality finish, operate with the highest efficiency and provide the user with the details that make a difference.

### Control

The **micro control** allows for pre-sets of temperature and speed settings. The temperature range is 176° F to 350° F. There are seven speed settings to assist in getting the precise speed for the linen type and moisture content.



When finished at the end of a day, simply press the STOP button and the control will allow the roll to continue to turn until it reaches a safe temperature of 176° F before the roll completely stops.

When you start the day, the control turns the roll at the lowest speed until it reaches 176° F to allow for more efficient energy use.

### Selecting the Proper Size

While our units are available with 8" or 13" or 20" diameter rolls, selecting the proper size will make the job easier. The larger the diameter of the roll the faster the operating speed since the linen is in more contact with the heated surface.

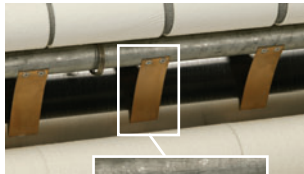
The ironer's finishing length should be slightly larger than the width of the linen you will finish. Most linens for tables of four will require a 63" width. If finishing sheets or banquet tablecloths, you may require a 126" width.



## Low Maintenance

The heated roll requires **no waxing** when used on a daily basis. This is an innovation that separates us from the competition.

A significant difference in UniMac's innovation is the **permanently lubricated bearings** on the 8" and 13" heated roll finishers. This can save hours of maintenance every month, while keeping your machine operating like it just came from the factory.



Another unique advantage of UniMac is the **finished goods fingers**. To ensure the linens remove themselves from the heated roll without wrapping around the roll, UniMac installs a row of fingers to keep your finisher running without destroying linens.



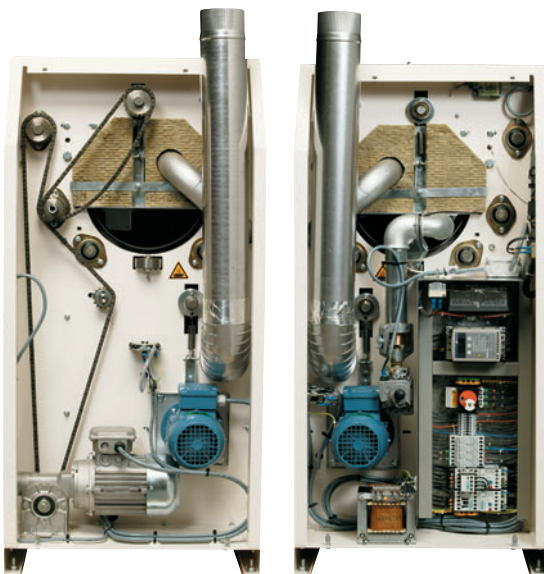
**Finished Goods Fingers**

## Energy Efficient

Our **low Btu** consumption ratings will save you money. We achieve a low Btu consumption through numerous details that make our flatwork finisher more energy friendly. To maintain the heat on the steel roll which presses the linen, we use **thicker steel** for a more consistent temperature.

While the heat is produced near the top of the unit, we place our **dual exhaust** fans toward the bottom to remove less heat from the roll. In combination with this, we totally **enclose the entire cabinet** to maintain more insulation around the heated roll. **Our 300° angle of contact** allows the linens a longer contact with the heated roll, allowing less energy to be consumed.

**Side Views**



## Safety Features

Your safety is of great concern when designing our products. A **stop bar** is designed to protect an operator from placing their hands too far into the machine.

Our control provides numerous alarms to indicate when certain machine components are not working properly. These **alarms include**, airflow safety, thermal motor warnings, speed regulator, ignition alarm and an overheating alarm.

If the machine's power is interrupted when a linen is being processed, the linen must be removed or it risks damage. We provide a manual crank to easily remove the linen before it is damaged.



## Details Make the Difference

Through our demands for innovation to assist our customers, UniMac offers user friendly items such as the **feeding tray** to assist in feeding napkins or longer items.

Our no-staple, nomex, **feed ribbons** are designed to last longer and always look good.

Our **return ribbons**, which are connected with staples, are covered with nomex to protect your linens from damage from the staples as they get worn.

The slanted **return trough** is more user-friendly than a flat return table where finished goods often get wrinkles prior to the operator removing them from the finisher.

The **finished goods fingers** are just another of the innovative details you get with UniMac flatwork finishers.

The compact design allows for the unit to be installed just two inches from the back wall.

## Warranty

UniMac products are of the highest quality. Our limited parts warranty includes non-textile components against failure from defect in material or workmanship during the first year.

# UniMac Heated Roll Flatwork Finisher Specifications

	UD08F055	UD13F063	UD13F079	UD13F126	UD20F075	UD20F098	UD20F126
Roll Diameter - in (mm)	8" (200)	13" (325)	13" (325)	13" (325)	20" (500)	20" (500)	20" (500)
Finishing Width - in (mm)	55" (1400)	63" (1600)	79" (2000)	126" (3200)	75" (1900)	98" (2500)	126" (3200)
Ironing Speed - ft/m (m/m)	3-15 (1-4.5)	3-30 (1-9)	3-30 (1-9)	3-30 (1-9)	3-30 (1-9)	3-30 (1-9)	3-30 (1-9)
Width - in (mm)	74" (1880)	86" (2192)	100 1/8" (2542)	154" (3910)	117 1/8" (2975)	140 3/4" (3574)	168 5/16" (4275)
Depth - in (mm)	17 1/2" (445)	26" (661)	26" (661)	34" (860)	42 3/16" (1072)	42 1/4" (1072)	42 1/4" (1072)
Height - in (mm)	52 1/2" (1335)	43 13/16" (1113)	43 13/16" (1113)	44" (1113)	46 1/8" (1171)	46 1/8" (1171)	46 1/8" (1171)
Roll Motor - HP (kW)	.33 (.25)	.33 (.25)	.33 (.25)	.33 (.25)	.5 (.37)	.5 (.37)	.5 (.37)
Roll Exhaust Motor - HP (kW)	1 x .12 (.09)	2 x .16** (2 x .12**)	2 x .16 (2 x .12)	2 x .16 (2 x .12)	2 x .34*** (2 x .25***)	2 x .34 (2 x .25)	2 x .34 (2 x .25)
Roll Exhaust Duct - in (mm)	1 x 3 1/4" (83)	2 x 4"*** (2 x 98**)	2 x 4" (2 x 98)	2 x 4" (2 x 98)	2 x 6"*** (2 x 150***)	2 x 6" (2 x 150)	2 x 6" (2 x 150)
<b>Gas Heating</b>							
Maximum Gas Input - Btu (kW)	N/A	76,792 (23)	102,340 (30)	136,000 (40)	136,453 (40)	187,623 (55)	235,495 (69)
Gas Inlet - in (mm)	N/A	3/4" (14)	3/4" (14)	3/4" (14)	1" (22)	1" (22)	1" (22)
Electrical Requirements • Circuit Breaker	N/A N/A N/A	120/60/1 • 15 230/50/3 • 6 400/50/3 • 6	120/60/1 • 15 230/50/3 • 6 400/50/3 • 6	120/60/1 • 15 230/50/3 • 6 400/50/3 • 6	120/60/1 • 15 230/50/3 • 6 400/50/3 • 6	120/60/1 • 15 230/50/3 • 6 400/50/3 • 6	120/60/1 • 15 230/50/3 • 6 400/50/3 • 6
<b>Electric Heating</b>							
Capacity Resistances - HP (kW)	14 (10.5)	21 (16)	27 (20)	N/A	42 (31.5)	54 (40.5)	72 (54)
Electrical Requirements • Circuit Breaker	208-240/60/3 • 40 230/50/3 • 40 400/50/3 • 25	208-240/60/3 • 50 230/50/3 • 50 400/50/3 • 32	208-240/60/3 • 63 230/50/3 • 63 400/50/3 • 40	N/A N/A N/A	208-240/60/3 • 100 230/50/3 • 100 400/50/3 • 63	208-240/60/3 • 125 230/50/3 • 125 400/50/3 • 63	208-240/60/3 • 163 230/50/3 • 163 400/50/3 • 100
<b>Steam Heating</b>							
Steam Inlet - in (mm)	N/A	N/A	N/A	N/A	3/4" (19.5)	3/4" (19.5)	3/4" (19.5)
Condensate Return - in (mm)	N/A	N/A	N/A	N/A	1/2" (12.7)	1/2" (12.7)	1/2" (12.7)
Hourly Consumption - lb/hr (kg/hr)	N/A	N/A	N/A	N/A	110 (50)	147 (67)	187 (85)
Min.-Max. Steam Pressure - psi (bar)	N/A	N/A	N/A	N/A	145 (10)	145 (10)	145 (10)
Electrical Requirements • Circuit Breaker	N/A N/A N/A	N/A N/A N/A	N/A N/A N/A	N/A N/A N/A	120/60/1 • 15 230/50/3 • 4 400/50/3 • 4	120/60/1 • 15 230/50/3 • 4 400/50/3 • 4	120/60/1 • 15 230/50/3 • 4 400/50/3 • 4
Shipping Weight - lb (kg)	418 (190)	1320 (599)	1474 (669)	2095 (950)	2167 (984)	2796 (1269)	3421 (1553)
Approvals	ETL, CE	CSA, ETL, CE	CSA, ETL, CE	CSA, ETL, CE	CSA, ETL, CE	CSA, ETL, CE	CSA, ETL, CE

\* Removal of trays will allow 32" door access on all models.

\*\* One motor on electric models. Electric heated models not available in Canada.

\*\*\* One motor on steam models.

Due to continuous product improvements, design and specifications subject to change without notice.

For further details on installation, refer to the Installation, Operation and Maintenance Instructions supplied with the ironer.



[www.uniwash.com](http://www.uniwash.com)

Alliance Laundry Systems  
Shepard Street, Ripon, WI 54971 Telephone: 1-800-587-5458  
©Copyright 2006 Alliance Laundry Systems LLC

